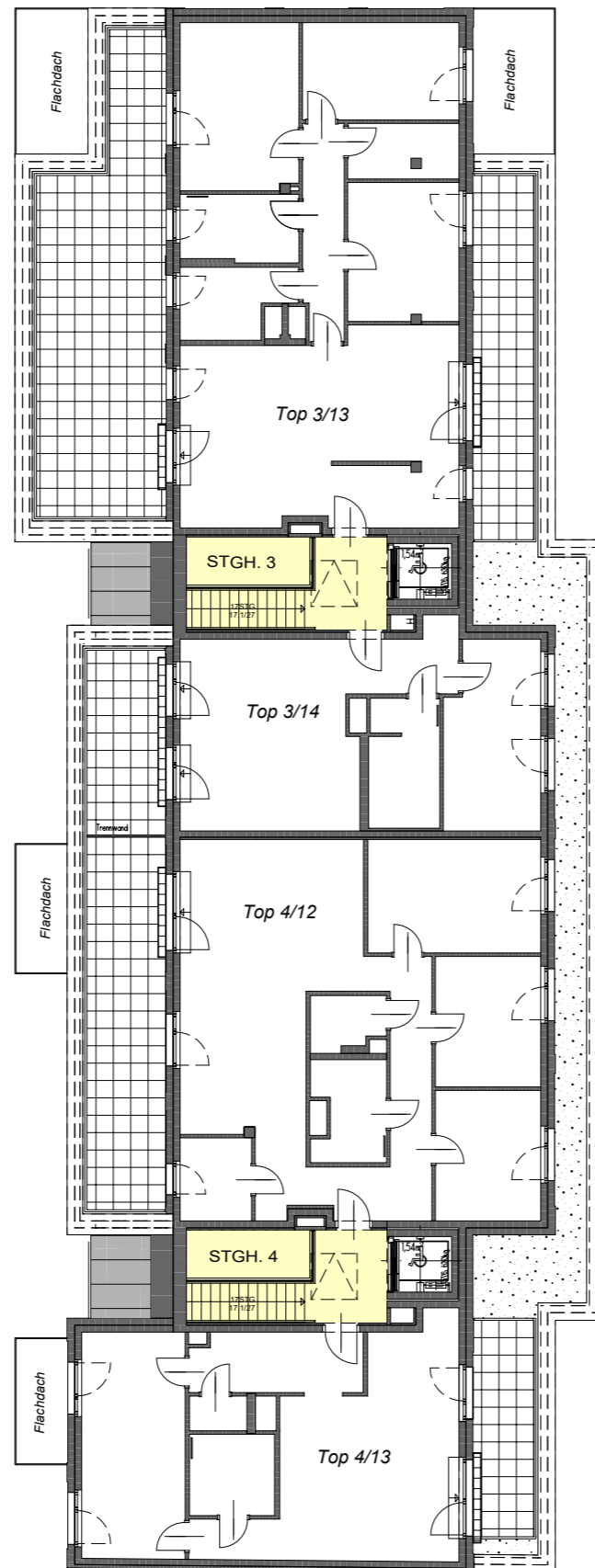
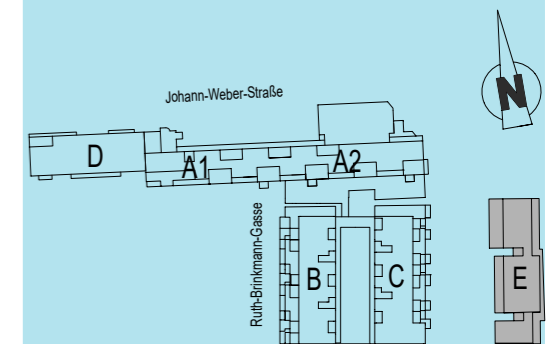
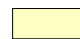
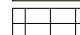


ÜBERSICHTSPLAN DG



LEGENDE:

-  Stiegenhaus 3+4
-  Wohnungsbezogene Freiflächen

Änderungen vorbehalten!



övw
Bauträger GmbH

1200 Wien I Brigittenauer Lände 50-54
Tel. 01 /908 14 38

PLANSTAND 11.03.2019

SYNN
architekten